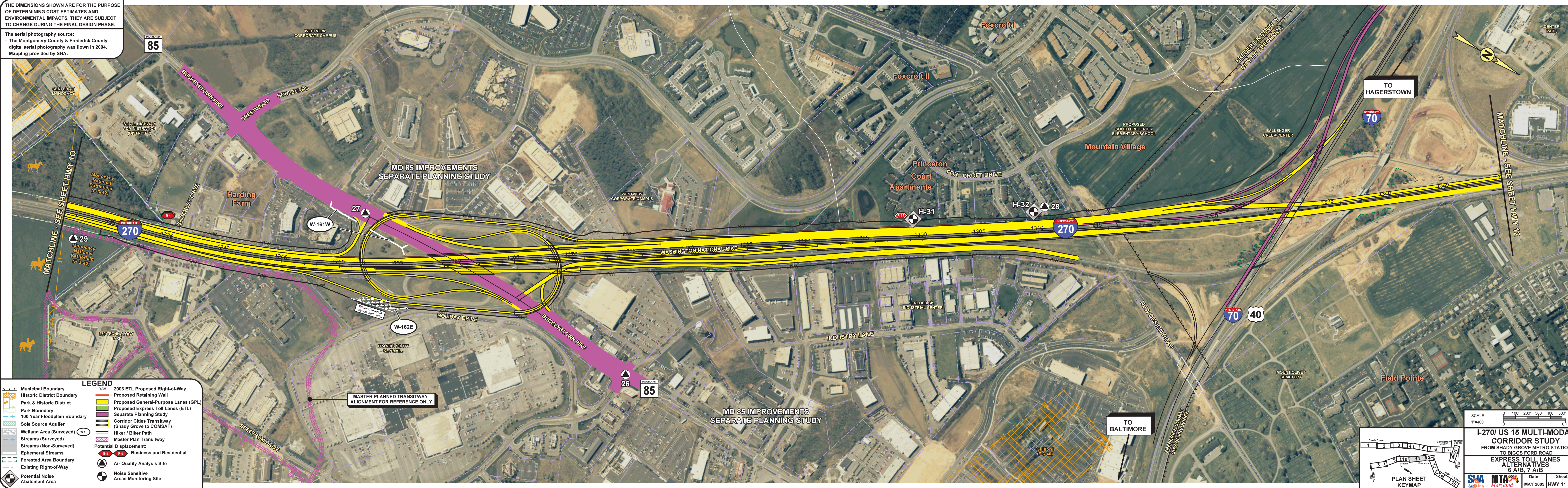


THE DIMENSIONS SHOWN ARE FOR THE PURPOSE OF DETERMINING COST ESTIMATES AND ENVIRONMENTAL IMPACTS. THEY ARE SUBJECT TO CHANGE DURING THE FINAL DESIGN PHASE.

The aerial photography source:
- The Montgomery County & Frederick County digital aerial photography was flown in 2004.
Mapping provided by SHA.



LEGEND

| | |
|--------------------------------|--|
| Municipal Boundary | 2006 ETL Proposed Right-of-Way |
| Historic District Boundary | Proposed Retaining Wall |
| Park & Historic District | Proposed General-Purpose Lanes (GPL) |
| Park Boundary | Proposed Express Toll Lanes (ETL) |
| 100 Year Floodplain Boundary | Separate Planning Study |
| Sole Source Aquifer | Corridor Cities Transitway (Shady Grove to COMSAT) |
| Wetland Area (Surveyed) | Hiker / Biker Path |
| Streams (Surveyed) | Master Plan Transitway |
| Streams (Non-Surveyed) | Potential Displacement: Business and Residential |
| Ephemeral Streams | Air Quality Analysis Site |
| Forested Area Boundary | Noise Sensitive Areas Monitoring Site |
| Existing Right-of-Way | |
| Potential Noise Abatement Area | |

I-270/ US 15 MULTI-MODAL CORRIDOR STUDY
FROM SHADY GROVE METRO STATION TO BIGGS FORD ROAD
EXPRESS TOLL LANES ALTERNATIVES 6 A/B, 7 A/B

Scale: 1"=400'
0 100' 200' 300' 400' 500' FEET
0 0.1 0.2 0.3 0.4 0.5 MILES

PLAN SHEET KEYMAP

SHADY GROVE METRO STATION
MONTGOMERY COUNTY
FREDERICK COUNTY
BIGGS FORD ROAD

DATE: MAY 2009
SHEET NO. HWY 11 OF 15