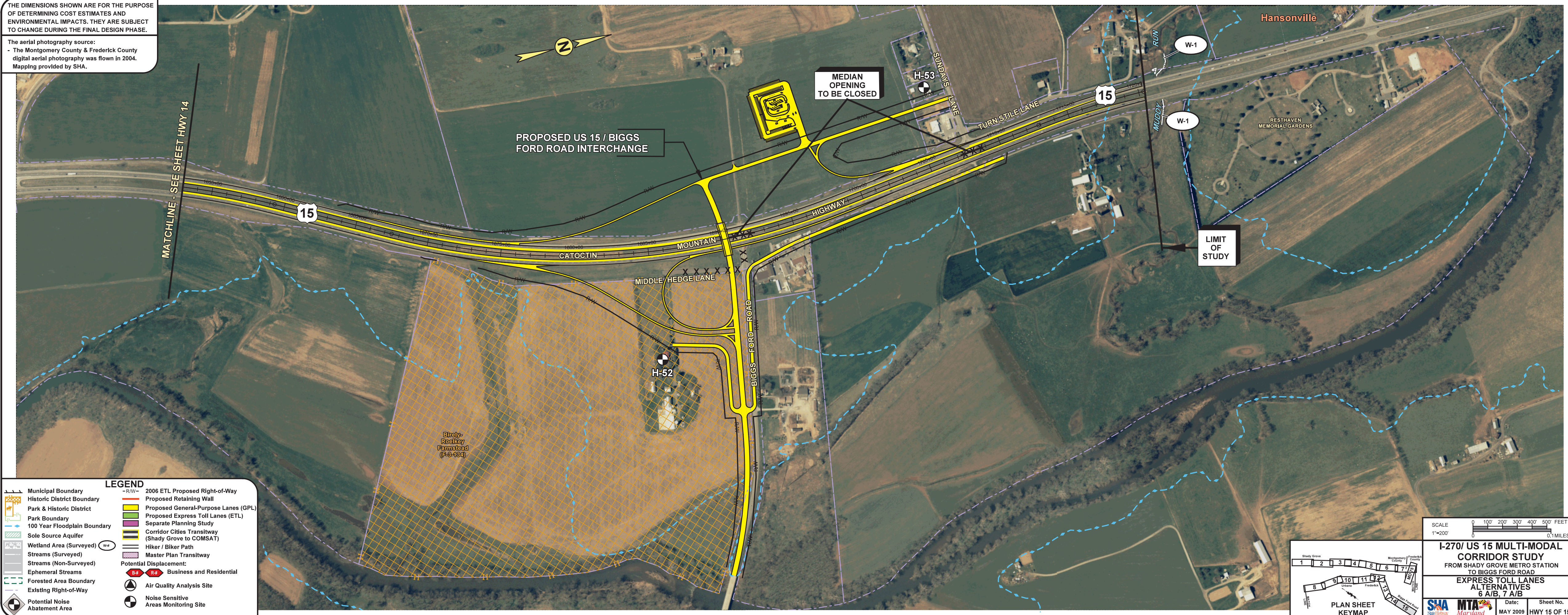


THE DIMENSIONS SHOWN ARE FOR THE PURPOSE OF DETERMINING COST ESTIMATES AND ENVIRONMENTAL IMPACTS. THEY ARE SUBJECT TO CHANGE DURING THE FINAL DESIGN PHASE.

The aerial photography source:
- The Montgomery County & Frederick County digital aerial photography was flown in 2004.
Mapping provided by SHA.



LEGEND

Municipal Boundary	2006 ETL Proposed Right-of-Way
Historic District Boundary	Proposed Retaining Wall
Park & Historic District	Proposed General-Purpose Lanes (GPL)
Park Boundary	Proposed Express Toll Lanes (ETL)
100 Year Floodplain Boundary	Separate Planning Study
Sole Source Aquifer	Corridor Cities Transitway (Shady Grove to COMSAT)
Wetland Area (Surveyed)	Hiker / Biker Path
Streams (Surveyed)	Master Plan Transitway
Streams (Non-Surveyed)	Potential Displacement: Business and Residential
Ephemeral Streams	Air Quality Analysis Site
Forested Area Boundary	Noise Sensitive Areas Monitoring Site
Existing Right-of-Way	
Potential Noise Abatement Area	

SCALE
1"=200'
0 100' 200' 300' 400' 500' FEET
0.1 MILES

I-270/ US 15 MULTI-MODAL CORRIDOR STUDY
FROM SHADY GROVE METRO STATION
TO BIGGS FORD ROAD
EXPRESS TOLL LANES ALTERNATIVES
6 A/B, 7 A/B

PLAN SHEET KEYMAP

SHA **MTA** **Maryland**

Date: MAY 2009 Sheet No. HWY 15 OF 15